

HB 2017 Transit Advisory Committee

April 26, 2024

Webex

Chat

- Right side window
- Chats are recorded

Participants

- Right side window
- Raise your hand

Video On/Off

Reactions

Leave Meeting

Mute/Unmute



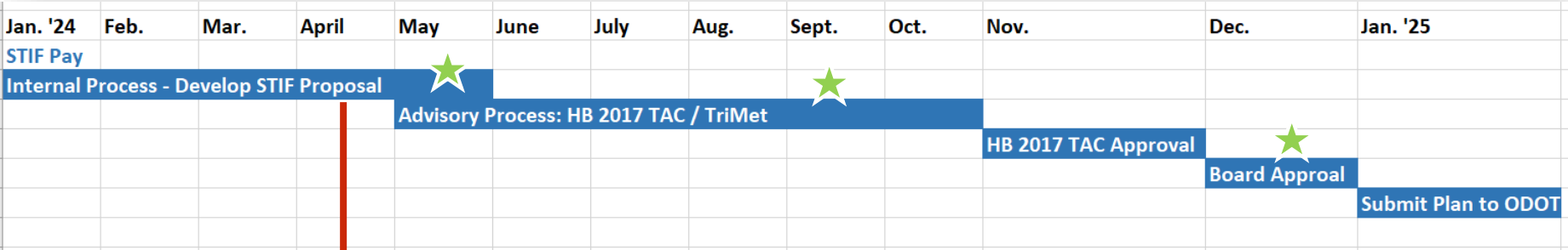
Meeting Agenda

Public comment	10:00 a.m.
Timeline Check-in	10:05 a.m.
FY26-27 STIF Equity Map with Pop Densities	10:10 a.m.
FY24-25 STIF Plan Amendment	10:30 a.m.
FY26-27 STIF Plan Budget Outline	11:00 a.m.
Meeting Adjourns	11:30 a.m.

Public Comment



Timeline for STIF Plan Process



We are here

★ TriMet Board of Directors Review



STIF Equity Map with Population Densities

TriMet Equity Index


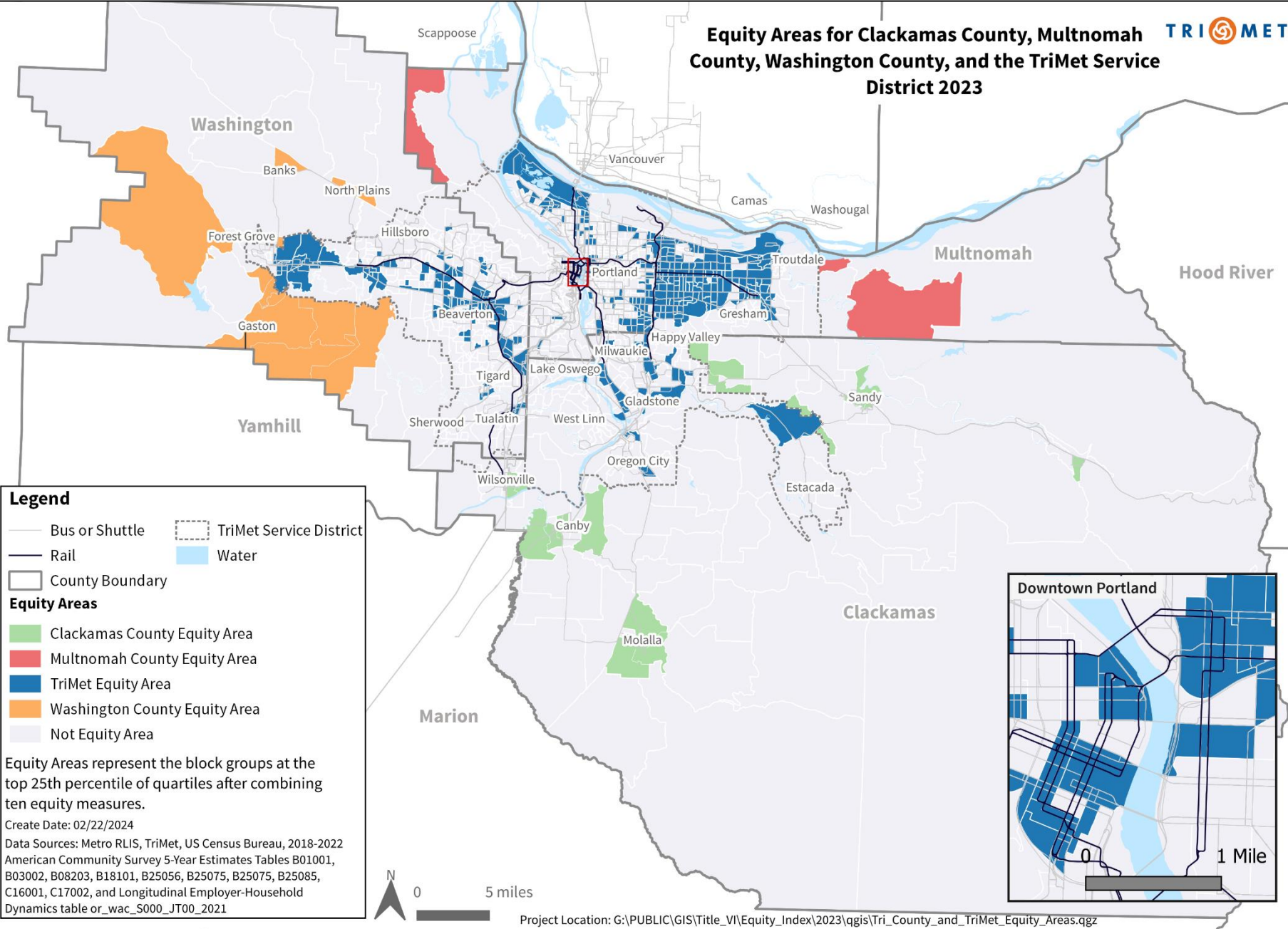
Equity Index 10 Factor Analysis:

- Low income population (200% of poverty)
- People of color
- Limited English proficiency
- People with disabilities
- Older adults (65+)
- Youth population (-22)
- Low & medium wage jobs
- Limited vehicle access
- Affordable housing units
- Key retail/human/social services

Top scoring quartile compose the equity areas

Separate analysis for county areas outside of TriMet

Equity Areas for Clackamas County, Multnomah County, Washington County, and the TriMet Service District 2023

Legend

- Bus or Shuttle
- Rail
- County Boundary
- TriMet Service District
- Water

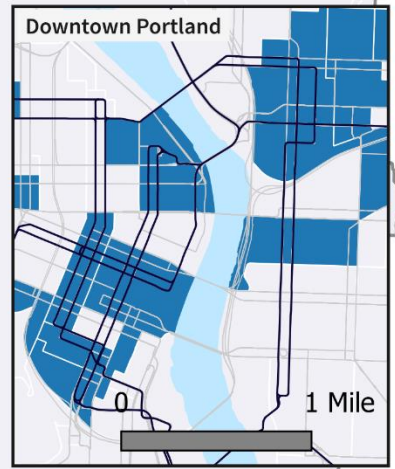
Equity Areas

- Clackamas County Equity Area
- Multnomah County Equity Area
- TriMet Equity Area
- Washington County Equity Area
- Not Equity Area

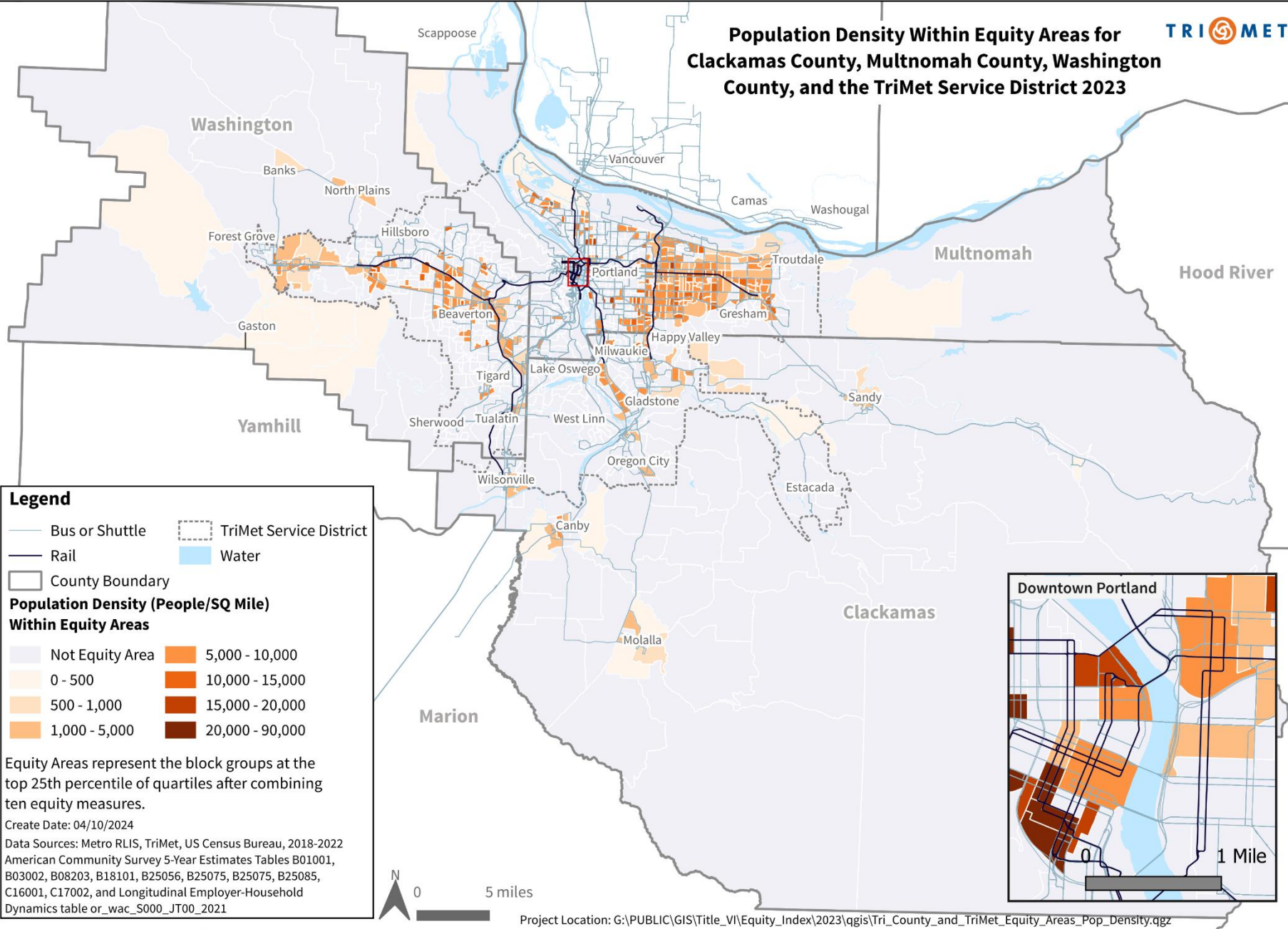
Equity Areas represent the block groups at the top 25th percentile of quartiles after combining ten equity measures.

Create Date: 02/22/2024

Data Sources: Metro RLIS, TriMet, US Census Bureau, 2018-2022 American Community Survey 5-Year Estimates Tables B01001, B03002, B08203, B18101, B25056, B25075, B25075, B25085, C16001, C17002, and Longitudinal Employer-Household Dynamics table or_wac_S000_JT00_2021



Population Density Within Equity Areas for Clackamas County, Multnomah County, Washington County, and the TriMet Service District 2023



Legend

- Bus or Shuttle
- Rail
- TriMet Service District
- Water
- County Boundary

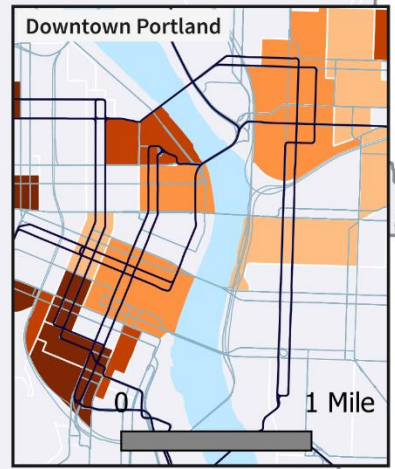
Population Density (People/SQ Mile) Within Equity Areas

	0 - 500		5,000 - 10,000
	500 - 1,000		10,000 - 15,000
	1,000 - 5,000		15,000 - 20,000
			20,000 - 90,000

Equity Areas represent the block groups at the top 25th percentile of quartiles after combining ten equity measures.

Create Date: 04/10/2024

Data Sources: Metro RLIS, TriMet, US Census Bureau, 2018-2022 American Community Survey 5-Year Estimates Tables B01001, B03002, B08203, B18101, B25056, B25075, B25075, B25085, C16001, C17002, and Longitudinal Employer-Household Dynamics table or_wac_S000_JT00_2021



FY24-25 STIF Plan Amendment

FY24-25 STIF Plan Amendment

Background

- TriMet and PTSPs build their STIF Plans using projections provided by ODOT – 1.5 years before the start of the biennium
- TriMet and PTSPs must project carryover at the end of the biennium – at least 1 year before the start of the biennium
- Current guidelines don't allow recipients to spend funds if they're not in the plan nor do they allow revisions to the plan
 - ODOT holds onto overage
 - Some carryover doesn't make it into the plan
- However, ODOT has been granted an Emergency Administrative Rule for a “One-Time” Amendment to the FY24-25 STIF Plan

FY24-25 STIF Plan Amendment

STIF Plan Amendment

- Allows TriMet (QE) to amend current STIF Plan for:
 - Revised revenue estimates from ODOT; and
 - Funds carried over from prior biennium that are not included in current plan.
- TriMet (QE) is eligible to increase plan by \$38.9 million
 - Total revised FY24-25 STIF Plan is \$245.2 million
 - If approved, funds can be spent in FY25
- No new projects – only more funds into existing projects
- Only QE Board approval required
- Plan Amendment is Due April 29th

FY24-25 STIF Plan Amendment

STIF Amendment Summary – TriMet, counties & transit providers

Provider & Project Description	Amount
TriMet Service (Fixed Route, LIFT, Student Fares)	\$ 28,866,058
TriMet Capital (Workforce System, Bus Stops, Better Bus, Security)	\$ 8,401,496
Subtotal TriMet	\$ 37,267,554
Public Transit Service Providers* (Transit Service, Capital, Planning)	\$ 1,714,709
Total FY24-25 STIF Plan Amendment	\$38,982,263

*PTSP's include: Clackamas Co, Multnomah Co, Washington Co, Canby Area Transit, Sandy Area Metro, South Clackamas Transit District, City of Wilsonville – SMART, Portland Streetcar, and Ride Connection

Questions

FY26-27 STIF Plan Budget Outline

Legislation

OAR 732-042-0015:

- *Expansion of bus routes and service to low-income areas*
- *Increased Frequency to low-income areas*
- *Natural gas or electric buses*
- *Fare mitigation for low-income communities*
- *1% for student transportation*
- *Connections between districts*
- *Reduce fragmentation of services*

Back to the Basics STIF Budget

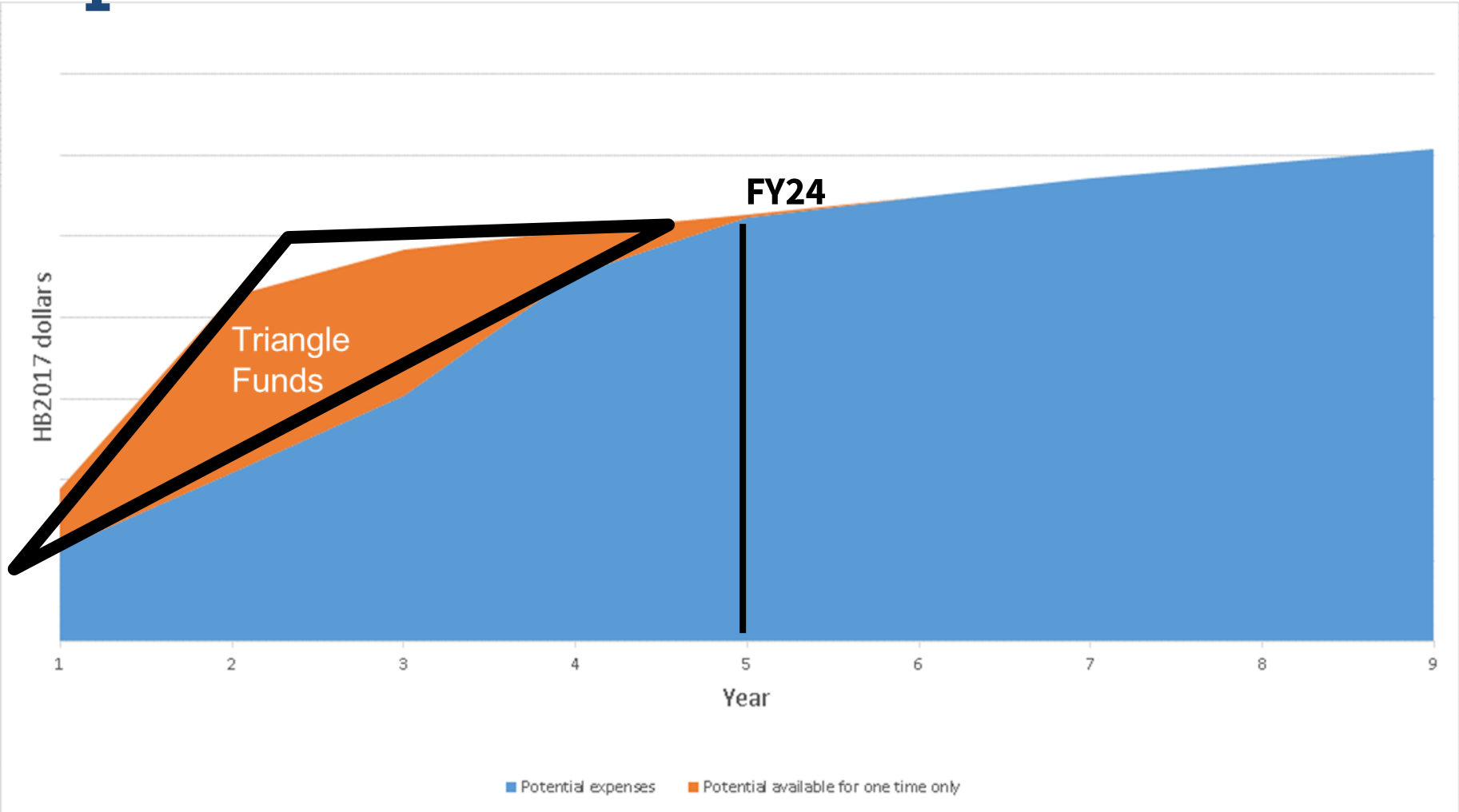
TriMet FY26-27 STIF Plan Budget Outline

- Service expansion & preservation
- Vehicles – fixed route and LIFT
- Low-Income Fare Program/Student Fare Program
- Regional Coordination Program/Sub-recipients
- Fund administrative activities of STIF

Capital & Security Projects

- Funded through TriMet General Funds
 - Allows us to better manage funds
 - Original intent of reducing capital expenditures over time

Triangle Funds: Declining Capital Expenditures



Questions

Older Adults/People with Disabilities

ATFAC

- STIF Population Based Formula Funds - \$10.5 mil in FY26-27
- State 5310 Funds – not yet known

New Direction

- STIF Human Services Program

Questions

Meeting Adjourned